



Federal Department of Home Affairs FDHA
Federal Office of Meteorology and Climatology MeteoSwiss

Contact: Secretariat of MeteoSwiss, 1530 Payerne
Cc: Alexander Haefele, Gianni Martucci

Phone: +41 58 460 94 44
e-mail: secretariat.payerne@meteoswiss.ch

UPDATE: Payerne, 24.01.2024

Dear colleague,

Following the official invitation letter to participate to the **15th GRUAN Implementation-Coordination Meeting (ICM-15)** from Monday, 11 March to Friday, 15 March 2024 in Bern, Switzerland, we provide herein some important information to help you organizing your trip to Switzerland in the best way.

Venue:

The meetings will be held at the Holiday Inn Bern-Westside, Riedbachstrasse 96, 3027 Bern ([homepage](#)) located in the *Westside* quarter of Bern. The hotel features a modern conference infrastructure, adventure pool complex with fitness centre and spa, shopping mall and multiplex cinema.

Accommodation and fees:

- Holiday Inn Bern-Westside, Riedbachstrasse 96, 3027 Bern.
- Conference fees of 150 CHF will be paid directly at the Hotel. The hotel will collect the conference fee (cash and card possible) at the beginning of the meeting. Attendees will get a receipt.
- The fees will be used to cover the global bill for the conference facilities.
- Rooms have been pre-booked at a special group rate. The room rate is 176 CHF/night for a single room with breakfast. + 5.70 CHF/day (City Tax)
- Booking of the rooms shall be done directly at meeting@hi-bw.ch.
- The hotel offers the possibility to travel by public transport within the city of Bern free of charges for the duration of their stay. The participants must ask for the activation of this service at the time of their booking.
- The room reservation code is “ICM-15” and shall be indicated in the subject of your booking request email
- Participants must specify their dietary requirements directly in the registration form (vegetarian, other...), thus the hotel will be able to take them into account.

Nearby hotels (alternatively, participants book the hotel of their choice):

Nearby the venue, only few hotels are available. A wider choice of hotels and apartments is available at about 5 km from the venue, between the railway station and the river Aare (old town).

Recommended ways to travel to the venue:

Air transportation: Bern is situated at mid-way between the Zürich airport and the Geneva airport. It exists also the possibility to fly directly to Bern's international airport Bern-Belp or to the Basel EuroAirport.

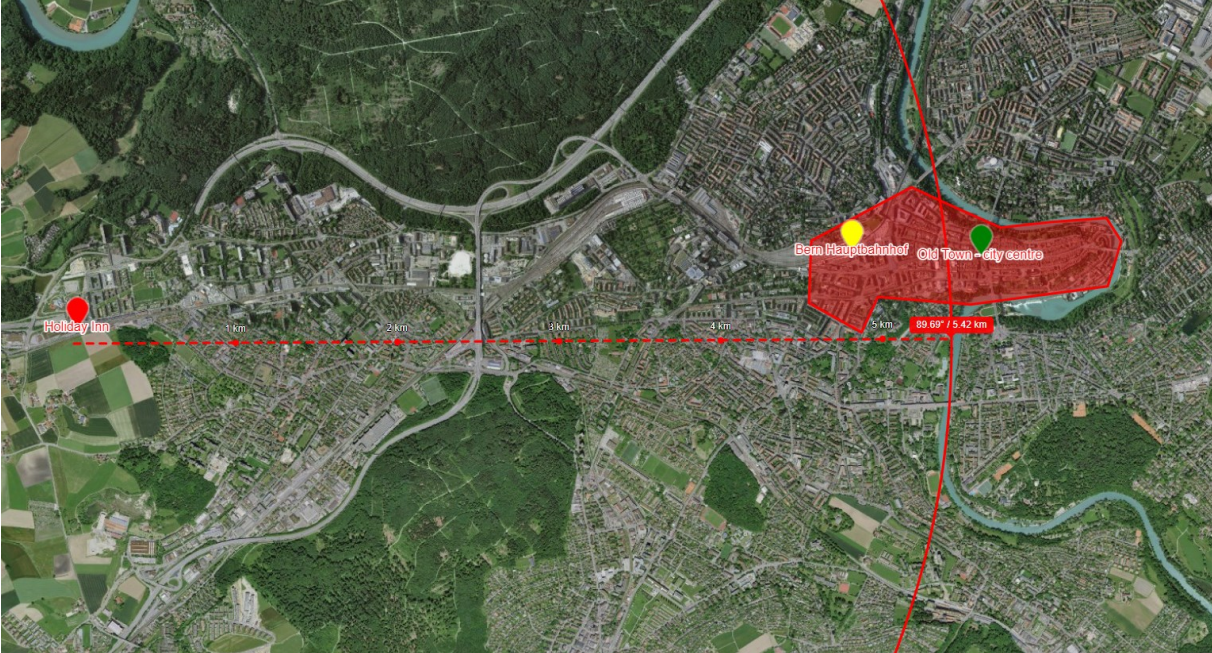
Ground transportation: Direct trains to Bern from the two main airports and from almost anywhere in Switzerland are available at high frequency, the train timetable is available at <https://www.sbb.ch/en>. From Zurich Airport, it takes 75 minutes to reach Bern and from Geneva Airport, it takes around 2 hours to reach Bern.

From city centre (old town) to the venue: the tram/train stop of the venue is « Bern Brünnen Westside ». Westside can be reached easily by public transport from city centre “Bern

Hauptbahnhof' either by tram 8 or by the city train S5 (S51 and S52). From Bern Hauptbahnhof, the participants will have to count 20 minutes by S5 and 40 minutes by tram 8 to reach the venue.

The venue is located at about 5 km west of the main station and city centre. The train and tram stop Bern Brünnen Westside is just besides the venue.

Bern-City Centre to Westside



Westside



Visa information & Invitation letters

Switzerland is part of the Schengen area agreement. You can check VISA requirements [here](#). MeteoSwiss can provide a personal invitation letter if such is required for your VISA application.

Currency:

The state currency is CHF (Swiss Franc). 1 CHF= \sim 1.04 EUR = \sim 1.11 USD

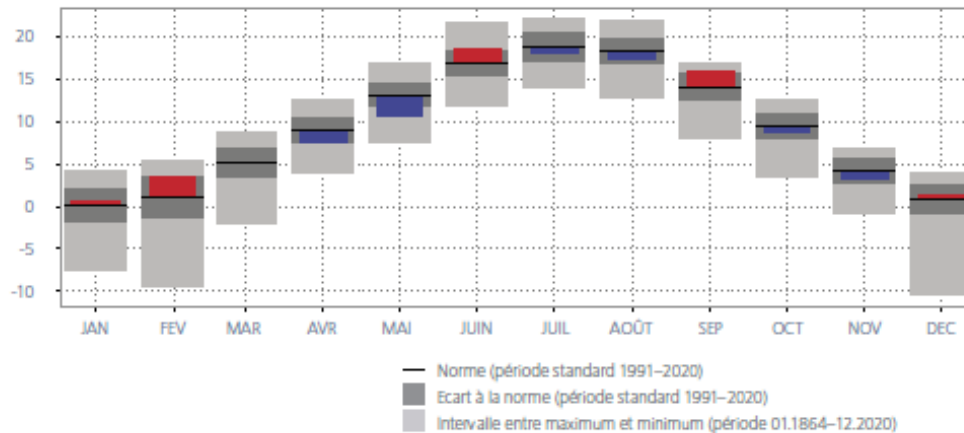
Time Zone:

During the winter, Central European Time (CET) applies in Switzerland. From the end of March to the end of October, Summer Time applies (CET + 1 hour).

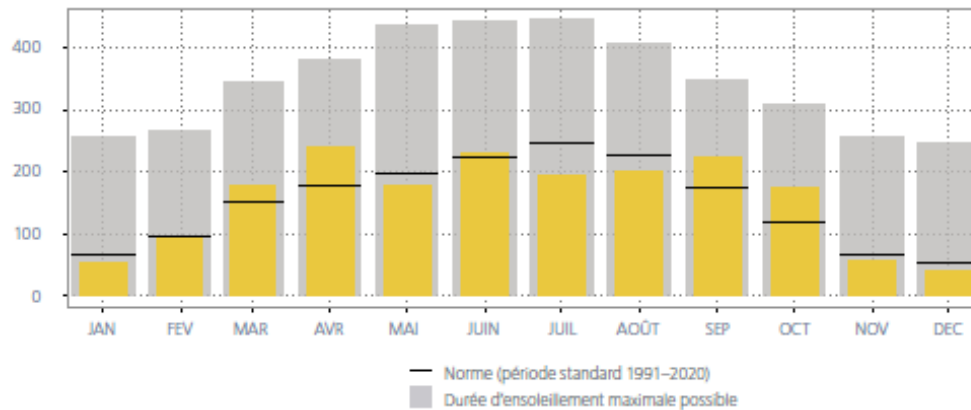
Climate :

Température, durée d'ensoleillement et précipitations Berne-Zollikofen (553 m) 1.1.–31.12.2021

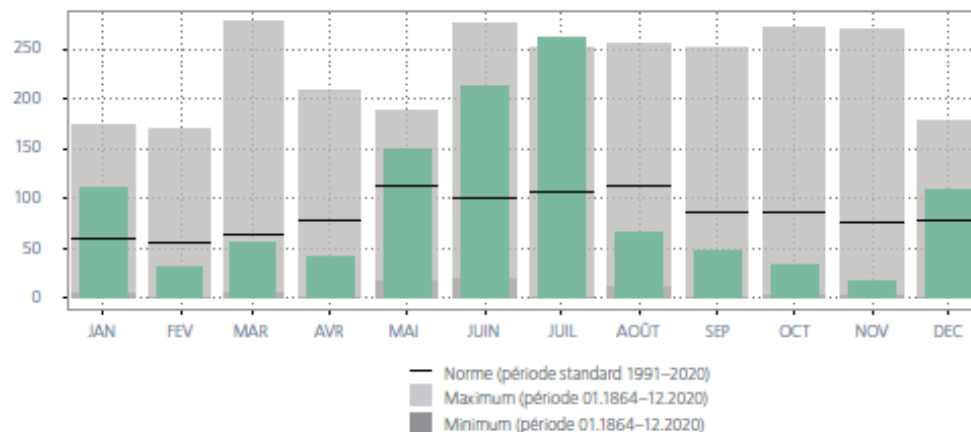
Moyenne mensuelle de la température de l'air en °C: Moyenne: 9,2; norme: 9,3



Durée mensuelle d'ensoleillement en h: Somme: 1861,9; norme: 1797,1



Somme mensuelle des précipitations en mm: Somme: 1136,6; norme: 1021,8



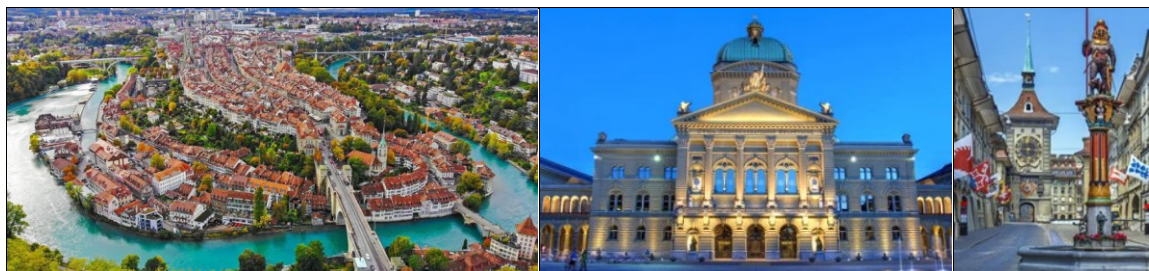
Power supply, plugs and adaptors:

The voltage in Switzerland, as in most of Europe, is 230V/50 Hz. Switzerland uses type C (2-pin) and Type J (3-pin) plugs. (Type C 2-pin plugs also fit J sockets.). Most power sockets are designed for three pin round plugs. The standard continental type plug with two round pins, applied for

many electrical travel products, may be used without problem. Adaptors are available in most hotels.

Bern

The medieval air of this city with its many fountains, sandstone facades, narrow streets and historic towers is unique. The elevated Rose Garden above the Bear Park and the platform of the 101-metre-high cathedral tower offer the best views of the old town round which the River Aare flows. The former entrenchments and bastions drop down steeply to the river. The boutiques, bars and cabaret stages of the old town, some of which are located in vaulted cellars, and the small street cafes attract locals as well as a lot of tourists. Bern is the seat of Switzerland's government. The Houses of Parliament (Bundeshaus) rise above the city just a stone's throw away from the railway station.



Yours sincerely,

On behalf of the ICM-15 Organizing Committee (icm-committee@gruan.org)

Alexander Haeefe, Gianni Martucci, Gonzague Romanens, Secretariat of MeteoSwiss, Payerne