



WMO/IOC/UNEP/ICSU
GLOBAL CLIMATE OBSERVING
SYSTEM (GCOS)

Doc. 5.10
(15.XI.2022)

**14th GRUAN Implementation-
Coordination Meeting (ICM-14)**

Session 5

La Réunion

28 November - 02 December 2022

GRUAN Site Report for Neumayer

(Submitted by Lead Centre)

Summary and Purpose of this Document

Report from the GRUAN site Neumayer for the period January to December 2021.

RsLaunchClient was established to be used on a daily basis.



GRUAN Site Report for Neumayer (GVN), 2021

Reported time range is Jan 2021 to Dec 2021

Created by the Lead Centre

Version from 2022-11-15

1 General GRUAN site information

Object	Value
Station name	Neumayer
Unique GRUAN ID	GVN
Geographical position	-70.6500 °S, -8.2500 °W, 43.0 m
Operated by	AWI Alfred-Wegener-Institut für Polarforschung, part of: HELMHOLTZ Helmholtz-Gemeinschaft
Main contact	Schmithüsen, Holger
WMO no./name	89002 NEUMAYER
Operators	currently 3, changes +1 / -2
Sounding Site	1

1.1 General information about GRUAN measurement systems

System	Name	Type	Setups	Measurements
GVN-RS-01	Neumayer Radiosonde Launch Site	Sounding Site	3	365

1.2 General comments from Lead Centre

No comments from Lead Centre.

2 System: Neumayer Radiosonde Launch Site (GVN-RS-01)

Object	Value
System name	Neumayer Radiosonde Launch Site
Unique GRUAN ID	GVN-RS-01
System type	Sounding Site (RS - Radiosonde)
Geographical position	-70.6500 °S, -8.2500 °W, 43.0 m
Operated by	AWI Alfred-Wegener-Institut für Polarforschung, part of: HELMHOLTZ Helmholtz-Gemeinschaft
Instrument contact	Schmithüsen, Holger
Started at	1982-02-01
Defined setups	3 (ROUTINE, OZONE, DUAL)
Possible streams	ECC, RS41, RS92

2.1 Lead Centre comments

2.1.1 Dataflow

Sonde dataflow to the GRUAN LC is operational since March 2020.

Currently, the dataflow includes streams of the Vaisala RS41-SGP and ECC Ozone sonde. All launches are promptly submitted using the RsLaunchClient.

2.2 GRUAN data products

Product	Version	Soundings received	Available at LC	Distributed by NCEI
---------	---------	--------------------	-----------------	---------------------

2.2.1 Stream: ECC

ECC		59	59	
-----	--	----	----	--

2.2.2 Stream: RS41

RS41		365	365	
RS41-RAW	001		365	
RS41-EDT	001		365	
RS41-GDP	001		360	
RS41-GDP-BETA	002		173	
RS41-GDP-BETA	003		307	

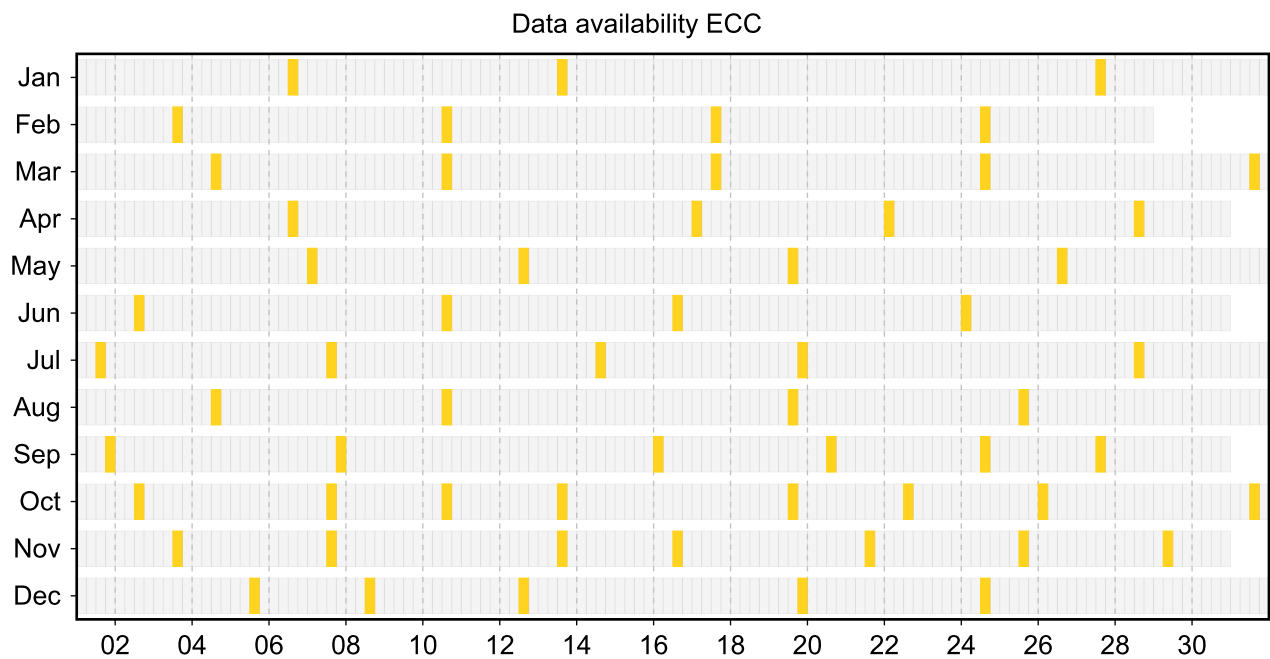
2.3 Availability of data products

Available (green): All steps of data processing have been successfully completed. The data product file is available at LC (e.g. files that didn't pass QA/QC or uncertified GRUAN data products) and/or at NCEI (a certified GRUAN data product file that did pass QA/QC).

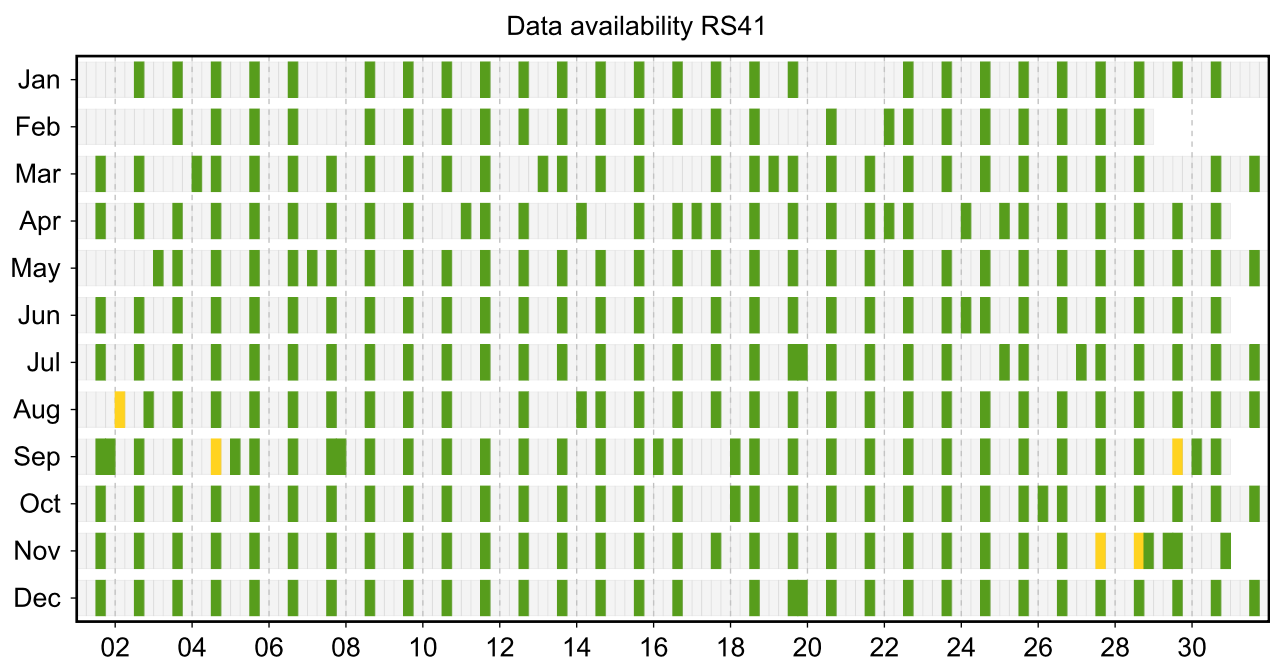
Unprocessed (yellow): The manufacturer-produced file with raw measurement data has been successfully converted into a GRUAN-standardized raw data format (NetCDF). The GRUAN data processing has not been performed or was aborted. Reasons for this may be a still missing GRUAN data processor or a processing-software error.

Original (red): The original, manufacturer-produced, raw data file is available (e.g. MWX data file) but was not converted into a GRUAN-standardized raw data format (NetCDF). Reasons for this may be missing data conversion software, a software error, or a corrupt data file.

2.3.1 Stream: ECC



2.3.2 Stream: RS41



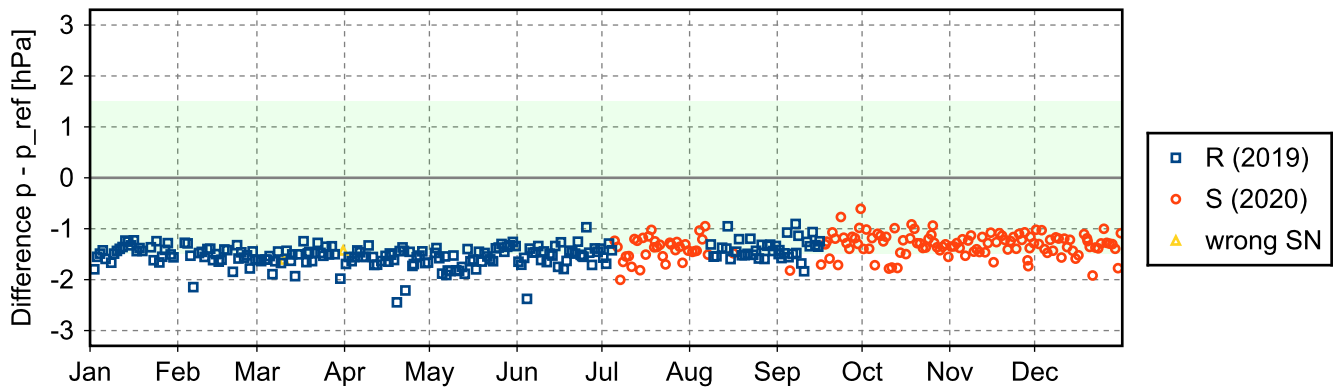
2.4 Instrument combinations of GVN-RS-01

Count	Instrument combination
59	ECC, RS41
306	RS41

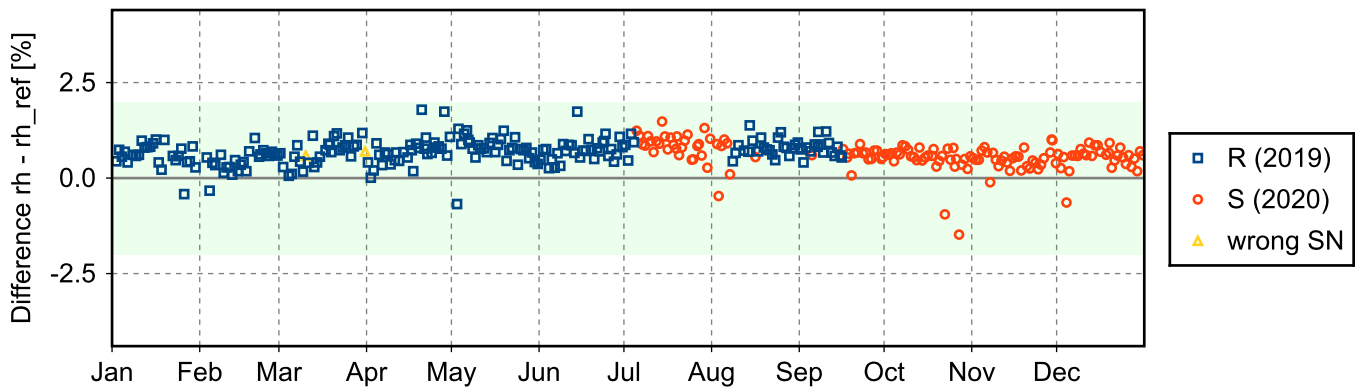
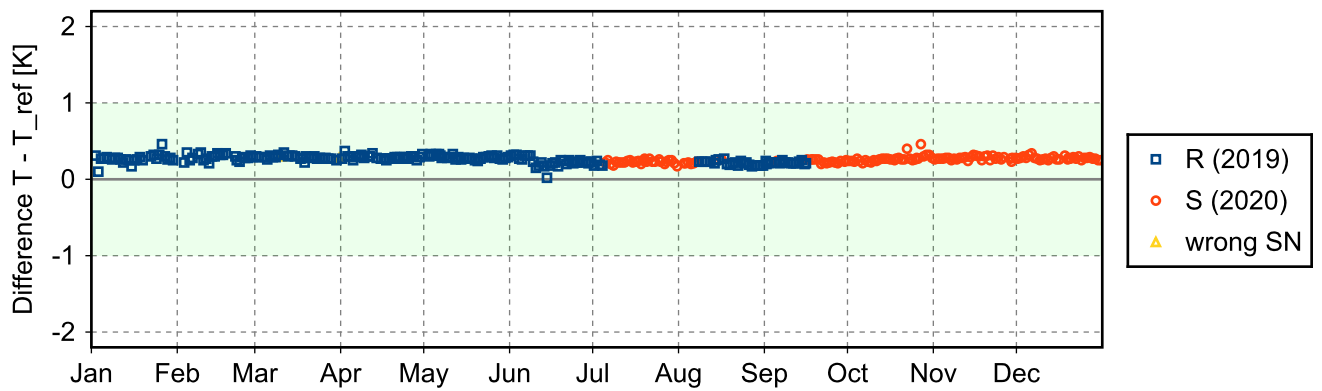
2.5 Instrument ground check

2.5.1 Stream: RS41

(1) GroundCheck: GC-RI41



(2) GroundCheck: GC-SHC



(3) GroundCheck: GC-SHELTER

2.6 Measurement events

