



WMO/IOC/UNEP/ICSU  
GLOBAL CLIMATE OBSERVING  
SYSTEM (GCOS)

Doc. 1.10  
(16.VI.2021)

---

**13th GRUAN Implementation-  
Coordination Meeting (ICM-13)**

---

Session 1

Virtual

15 November - 19 November 2021

## GRUAN Site Report for Neumayer

*(Submitted by Lead Centre)*

---

### **Summary and Purpose of this Document**

Report from the GRUAN site Neumayer for the period January to December 2020.

---





# GRUAN Site Report for Neumayer (GVN), 2020

Reported time range is Jan 2020 to Dec 2020

Created by the Lead Centre

Version from 2021-04-27

## 1 General GRUAN site information

Object	Value
Station name	Neumayer
Unique GRUAN ID	GVN
Geographical position	-70.6500 °S, -8.2500 °W, 43.0 m
Operated by	AWI   Alfred-Wegener-Institut für Polarforschung, part of: HELMHOLTZ   Helmholtz-Gemeinschaft
Main contact	Schmithüsen, Holger
WMO no./name	89002 NEUMAYER
Operators	currently 4, changes +0 / -0
Sounding Site	1

### 1.1 General information about GRUAN measurement systems

System	Name	Type	Setups	Measurements
GVN-RS-01	Neumayer Radiosonde Launch Site	Sounding Site	3	312

### 1.2 General comments from Lead Centre

No comments from Lead Centre.

## 2 System: Neumayer Radiosonde Launch Site (GVN-RS-01)

<b>Object</b>	<b>Value</b>
System name	Neumayer Radiosonde Launch Site
Unique GRUAN ID	GVN-RS-01
System type	Sounding Site (RS - Radiosonde)
Geographical position	-70.6500 °S, -8.2500 °W, 43.0 m
Operated by	AWI   Alfred-Wegener-Institut für Polarforschung, part of: HELMHOLTZ   Helmholtz-Gemeinschaft
Instrument contact	Schmithüsen, Holger
Started at	1982-02-01
Defined setups	3 (ROUTINE, OZONE, DUAL)
Possible streams	ECC, RS41, RS92

### 2.1 Lead Centre comments

#### 2.1.1 Change management

Regularly twin soundings were performed with Vaisala RS92-SGP and RS41-SGP until August 2020.

#### 2.1.2 Dataflow

Sonde dataflow to the GRUAN LC is operational since March 2020.

Currently, the dataflow includes streams of the Vaisala RS41-SGP, RS92-SGP and ECC Ozone sonde. All launches are promptly submitted using the RsLaunchClient.

## 2.2 GRUAN data products

Product	Version	Soundings received	Available at LC	Distributed by NCEI
---------	---------	--------------------	-----------------	---------------------

### 2.2.1 Stream: ECC

ECC		53	53	
-----	--	----	----	--

### 2.2.2 Stream: RS41

RS41		312	312	
RS41-GCA	001		303	
RS41-RAW	001		312	
RS41-EDT	001		311	
RS41-GDP-ALPHA	003		58	
RS41-GDP-ALPHA	004		90	
RS41-GDP-BETA	001		309	
RS41-GDP-BETA	002		82	

### 2.2.3 Stream: RS92

RS92		27	27	
RS92-INT	001		27	
RS92-RAW	002		27	
RS92-EDT	001		27	
RS92-GDP	002		27	

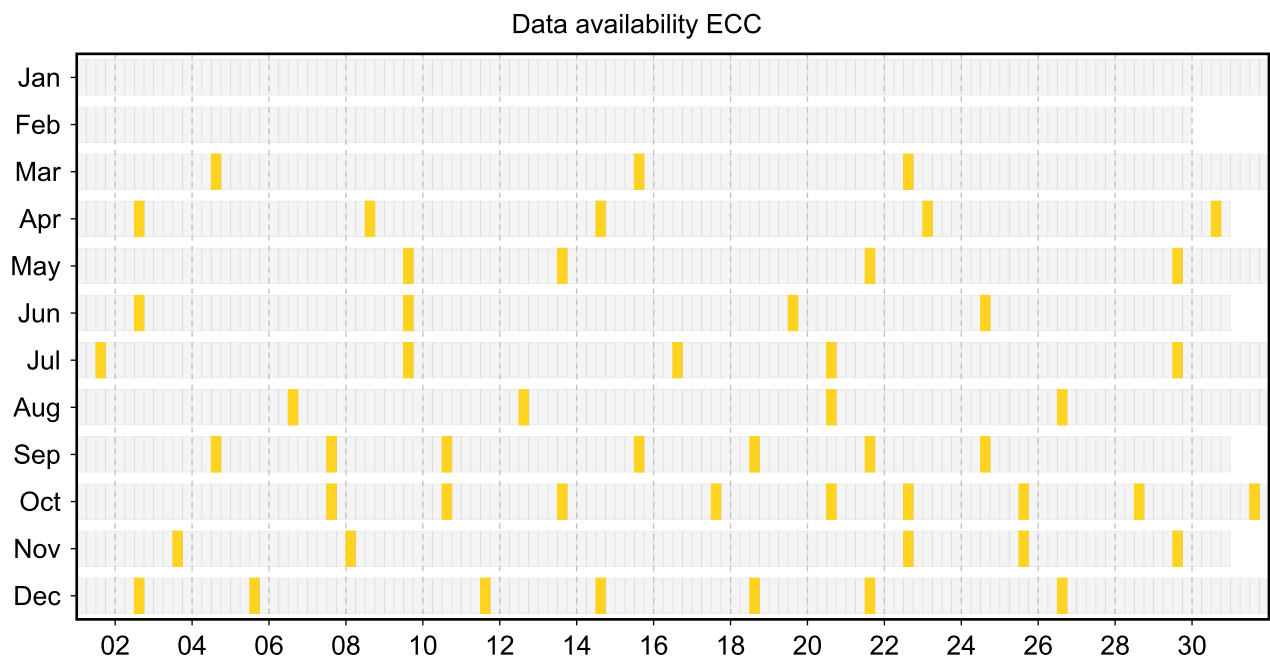
## 2.3 Availability of data products

Available (green): All steps of data processing have been successfully completed. The data product file is available at LC (e.g. files that didn't pass QA/QC or uncertified GRUAN data products) and/or at NCEI (a certified GRUAN data product file that did pass QA/QC).

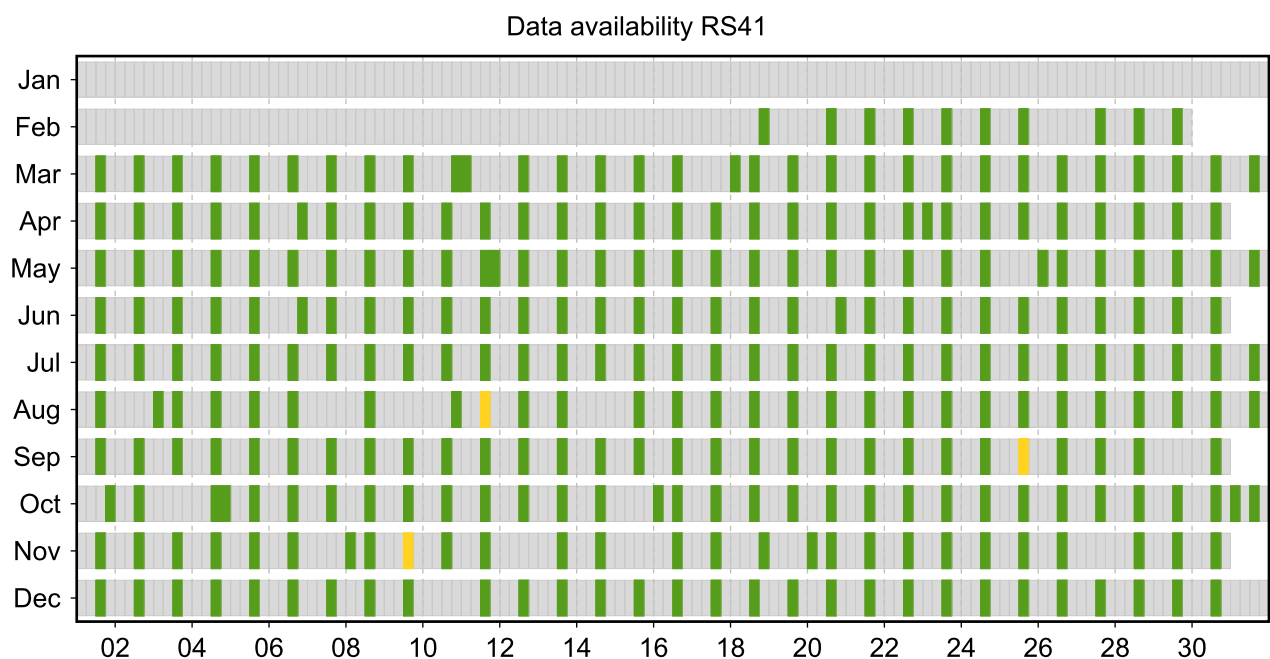
Unprocessed (yellow): The manufacturer-produced file with raw measurement data has been successfully converted into a GRUAN-standardized raw data format (NetCDF). The GRUAN data processing has not been performed or was aborted. Reasons for this may be a still missing GRUAN data processor or a processing-software error.

Original (red): The original, manufacturer-produced, raw data file is available (e.g. MWX data file) but was not converted into a GRUAN-standardized raw data format (NetCDF). Reasons for this may be missing data conversion software, a software error, or a corrupt data file.

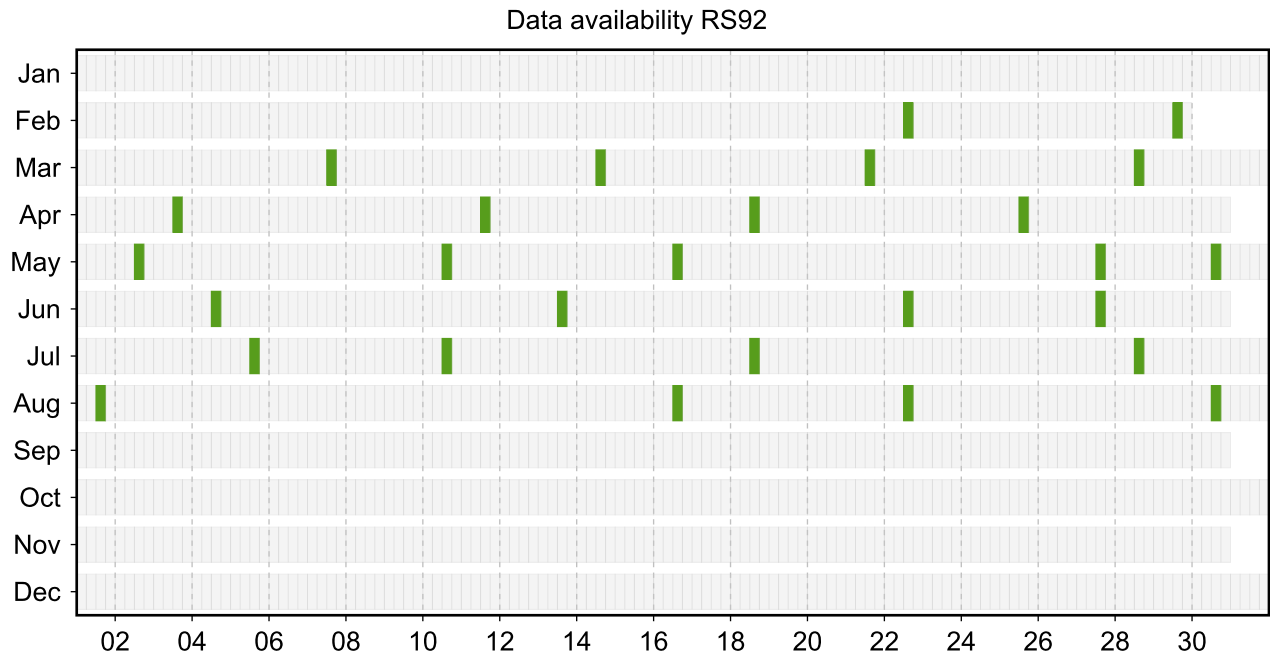
### 2.3.1 Stream: ECC



### 2.3.2 Stream: RS41



2.3.3 Stream: RS92



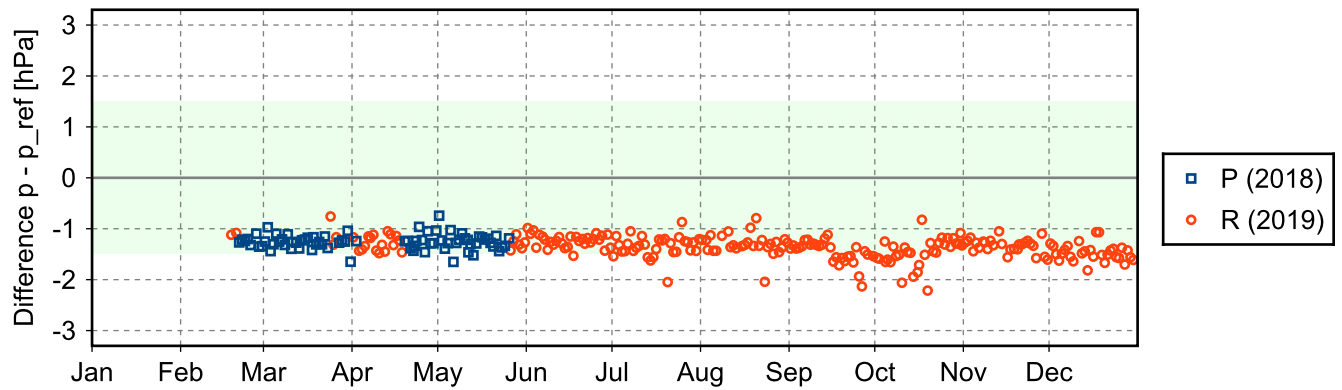
2.4 Instrument combinations of GVN-RS-01

Count	Instrument combination
53	ECC, RS41
232	RS41
27	RS41, RS92

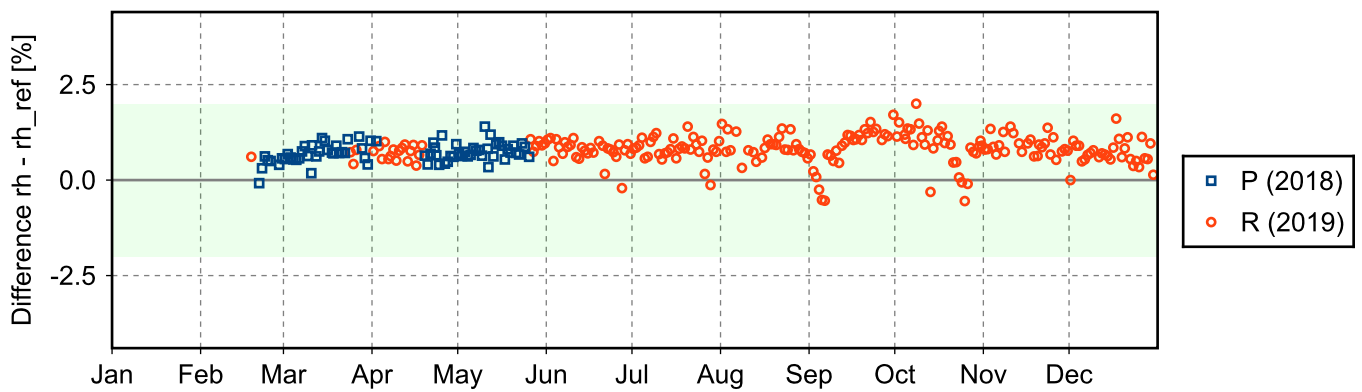
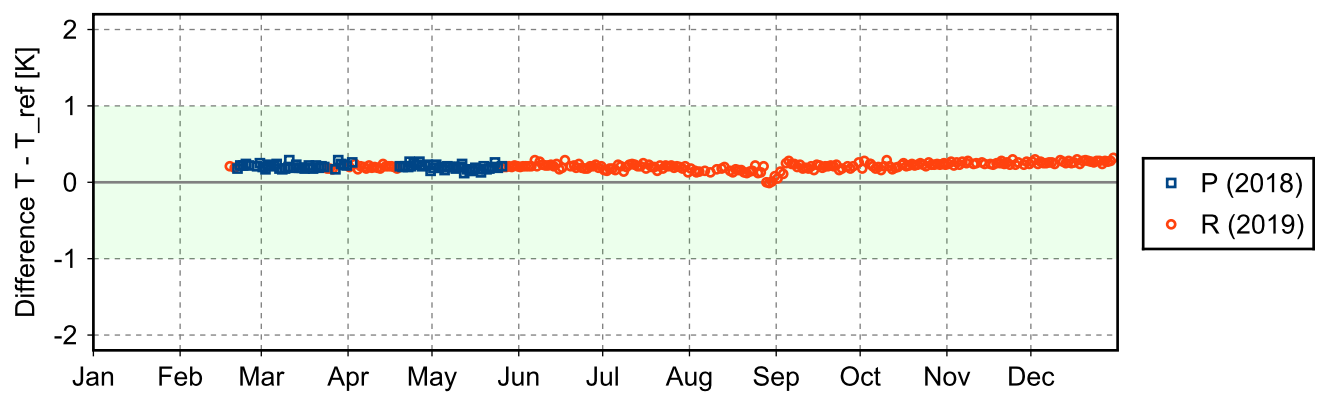
## 2.5 Instrument ground check

### 2.5.1 Stream: RS41

(1) GroundCheck: GC-RI41



(2) GroundCheck: GC-SHC

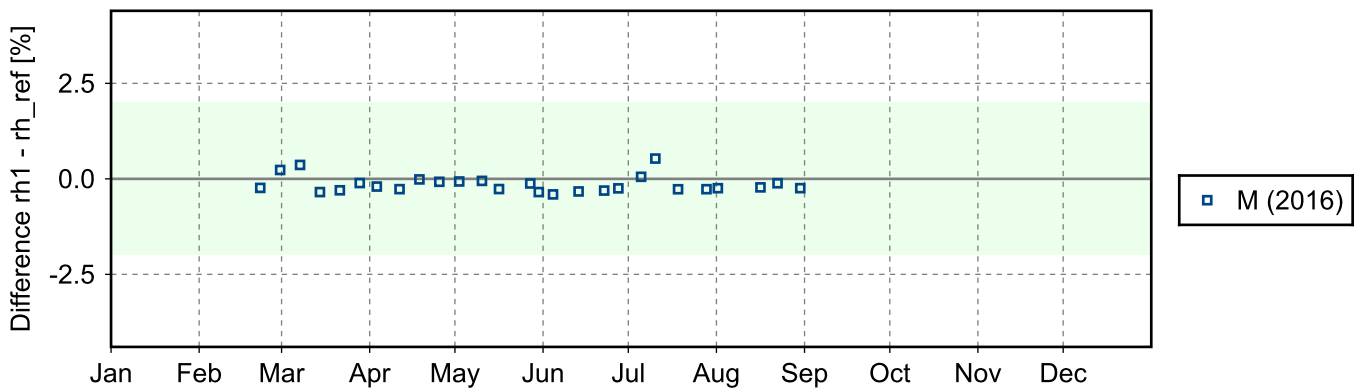
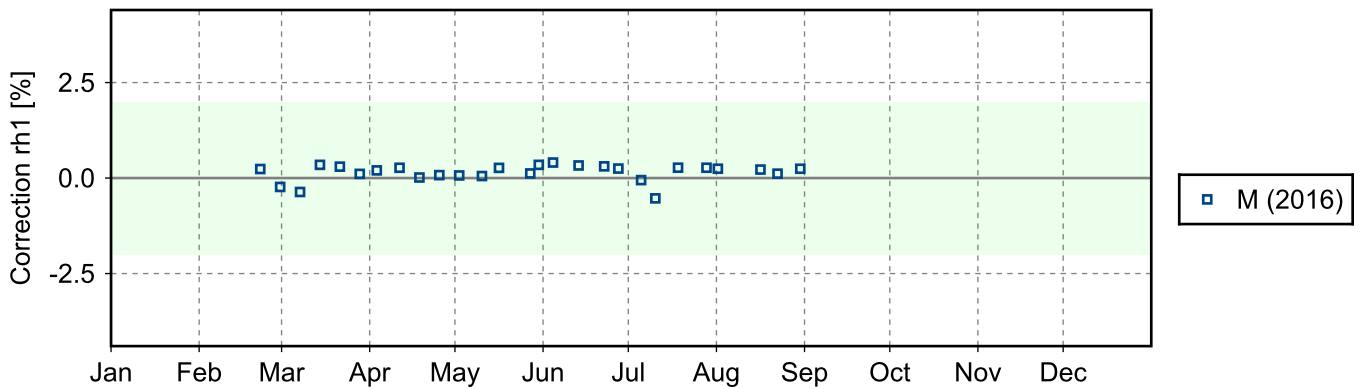
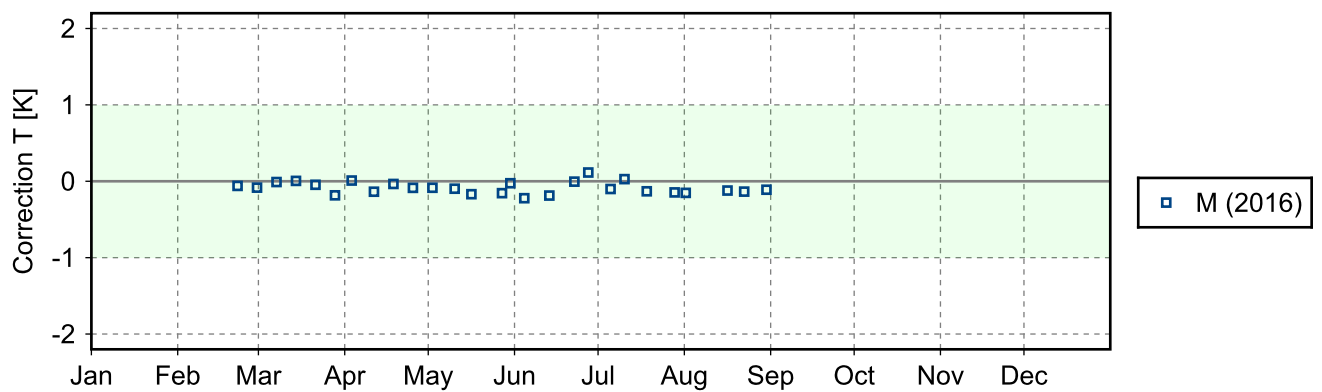
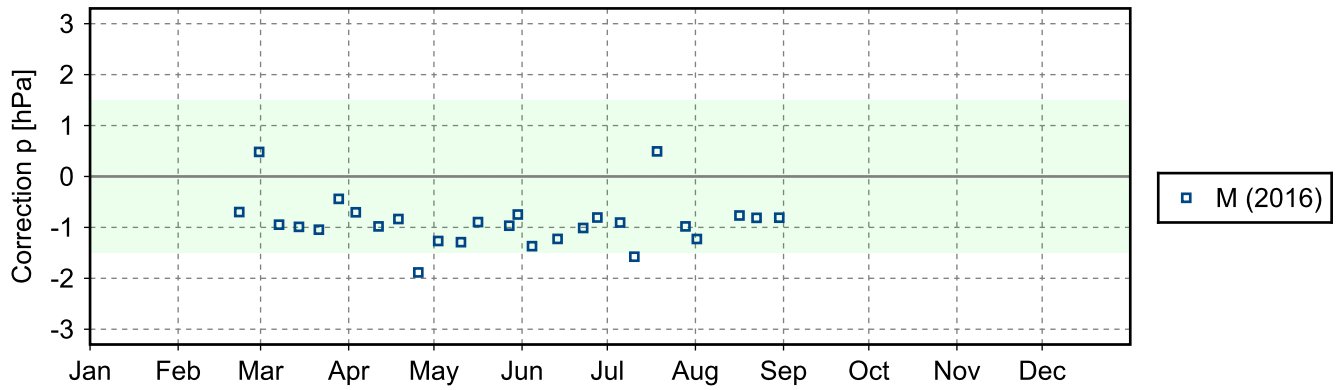


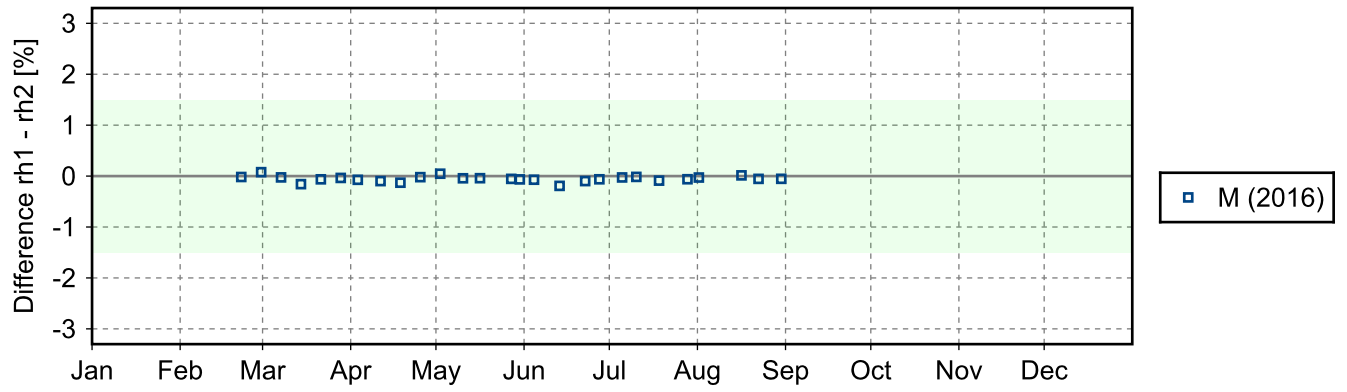


**(3) GroundCheck: GC-SHELTER**

2.5.2 Stream: RS92

**(1) GroundCheck: GC-GC25**





### 2.6 Measurement events

